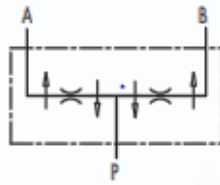


2 ways flow divider 3/8"

V-EQ



USE AND OPERATION

These valves allows the division of inlet flow into two equals parts (50/50) and they unify it in the reverse direction indipendently of any pressure changes and flow.

These valves are used when two equal actuators, that are not mechanically coupled, supplied by the same pump and controlled by a single distributor, must move simultaneously both at input and output.

MATERIALS AND FEATURES

Body	cast iron / steel Internal
Parts	hardened and ground steel
Seals	BUNA N standard and Teflon
Tightness	by diameter combination. Minor leakage Cylinder stroke error tolerance of 2%. Any synchronisation differences are compendated by the terminal position of the stroke.

APPLICATIONS

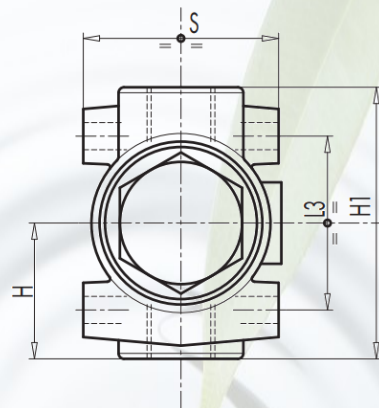
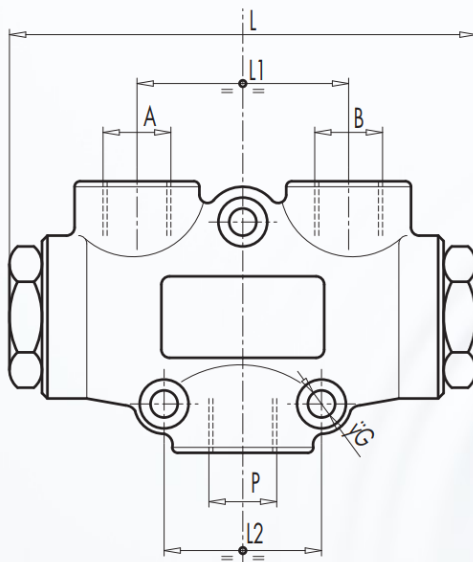
Connect P to pressure flow and A and B to the actuators.

2 ways flow divider 3/8"

V-EQ



Model	Min. Flow (L/min.)	Max. Flow (L/min.)	Working pressure (bar)	Peak pressure
V-EQ8	1	3	250	300
V-EQ10	3	6	250	300
V-EQ15	6	10	250	300
V-EQ20	10	20	250	300
V-EQ22	20	32	250	300
V-EQ25	25	40	250	300
V-EQ30	40	60	250	300
V-EQ50	60	80	250	300



Mo- del	P GAS	A-B GAS	L mm	L1 mm	L2 mm	L3 mm	ØG mm	H mm	H1 mm	S mm	Weight Kg
V-EQ8	G 3/8"	G 3/8"	117	53	40	45	7	35	68	48	1.27
V-EQ10											1.27
V-EQ15											1.28
V-EQ20											1.27
V-EQ22											1.28
V-EQ25	G 1/2"	G 3/8"	117	53	40	45	7	35	68	48	1.28
V-EQ30											1.26
V-EQ50											1.26

TAON

Hydraulik Komponenter

TAON Hydraulic Components ApS are specialists in hydraulic solutions, components and tool.

TAON Hydraulic Components ApS • +45 24 48 84 80 • info@taon.dk • www.taon.dk

© TAON Hydraulic will always help you find the best solution.