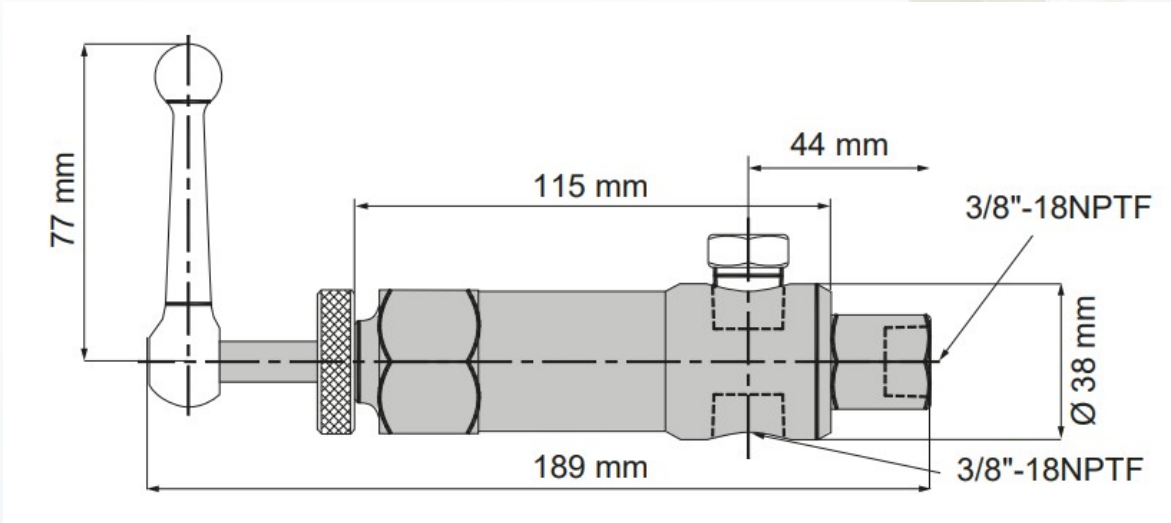
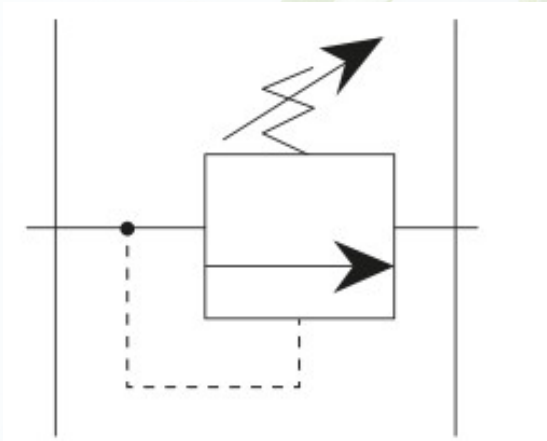


# Pressure Relief Valve

CVR3



Valve type	Model Number	Ports	Max. Pressure	Application
Pressure Relief Valve	CVR3	3/8" - 18NPFT	700 Bar	Controls pressure developed by the pump in hydraulic loop. By-pass occurs when preset pressure reaches 0–700 Bar. Turn clockwise to increase pressure, counter-clockwise to decrease.