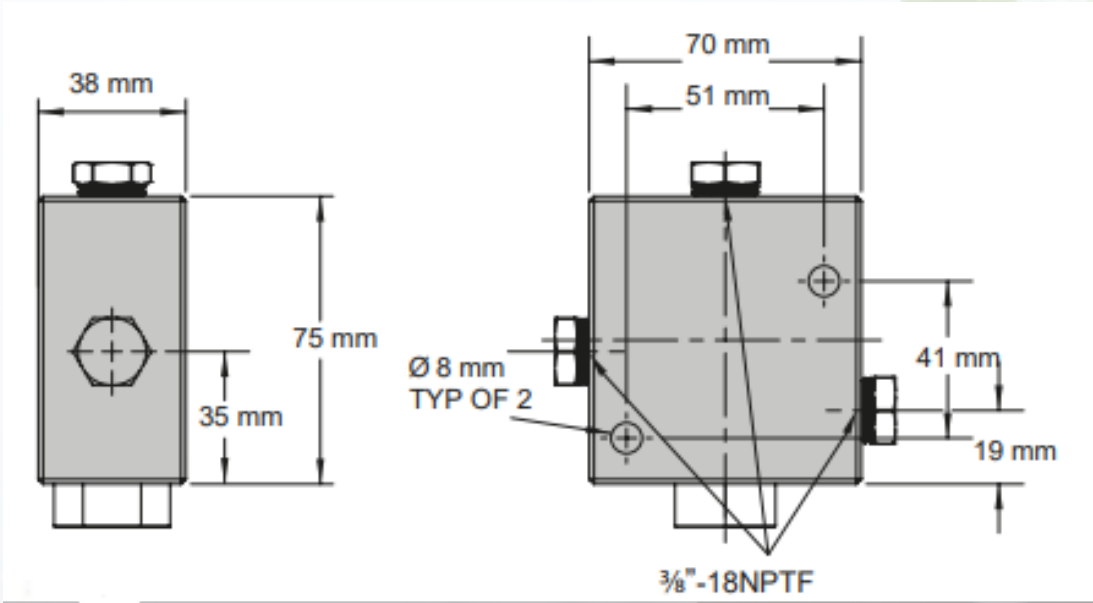
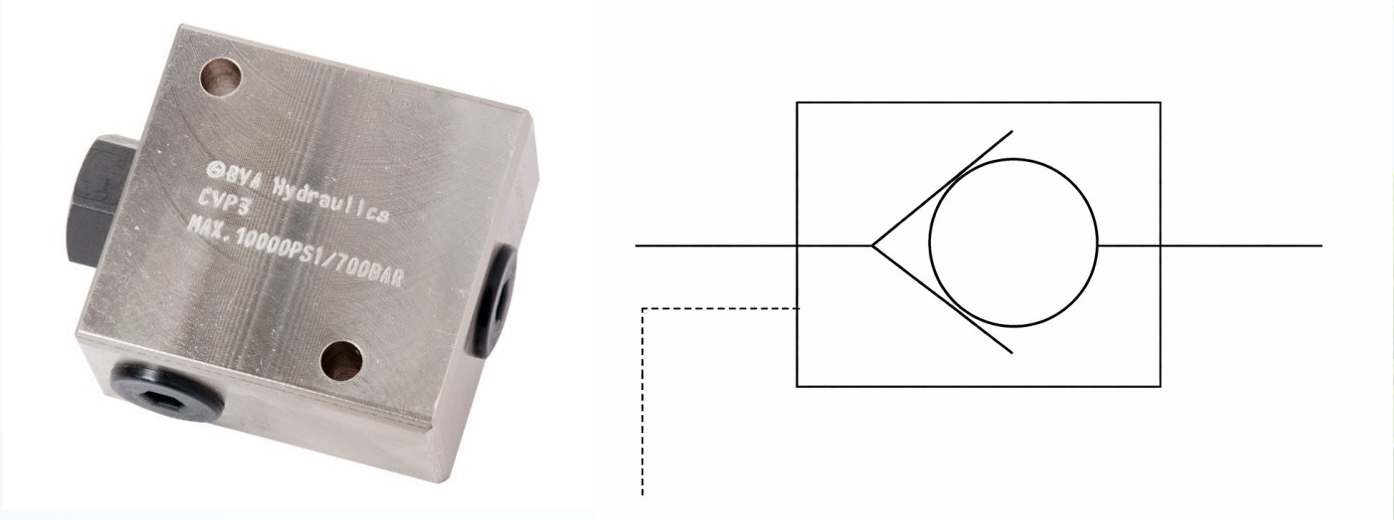


# Pilot Operated Check Valve

CVP3



Valve type	Model Number	Ports	Max. Pressure	Application
Pilot Operated Check Valve	CVP3	3/8"-18NPTF	700 Bar	Mounted in line with a cylinder which will hold pressure in the event of pressure loss in the system. Most often used on double-acting cylinders with pilot port, receiving pressure from a tee off of the cylinder retracting line. Pilot pressure ratio 15% or 6.5:1