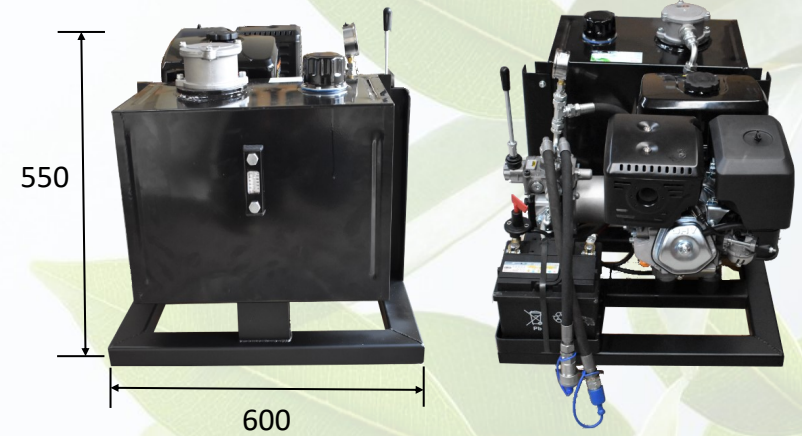
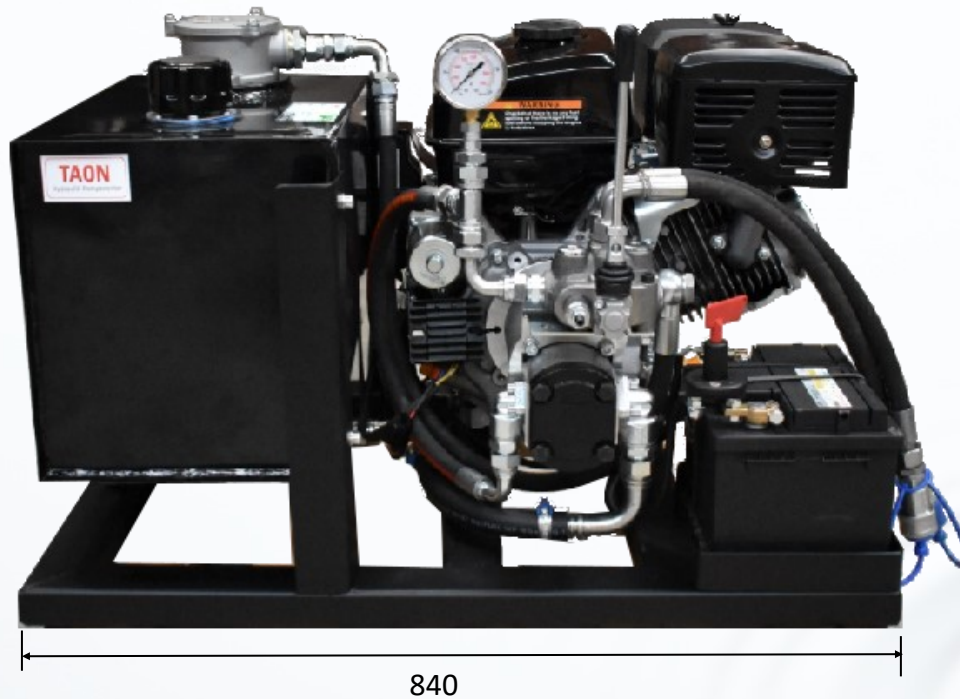


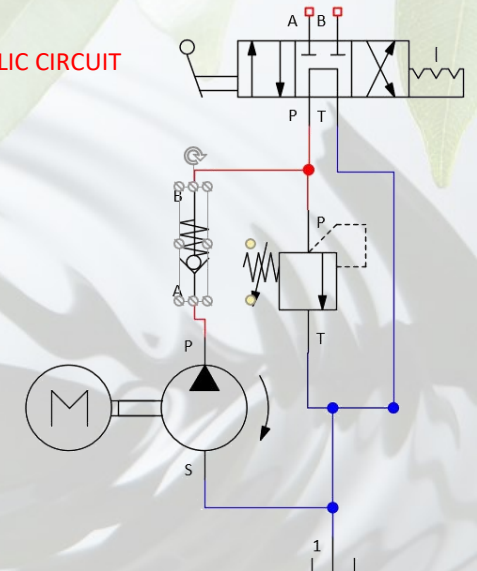
BP13-01 Gasoline Hydraulic Power Unit



HYDRAULIC CIRCUIT

P = 1/2"

T = 1/2"



MOTOR

Power: 13 HP Gasoline engine

PUMP & OIL TANK

Pump displacement: 11,0 cc/rev
Tank Capacity: 30 liter square tank
Returnfilter 10 μ m

MAX. PRESSURE

P: 120 bar

FLOW

38,0 L/min